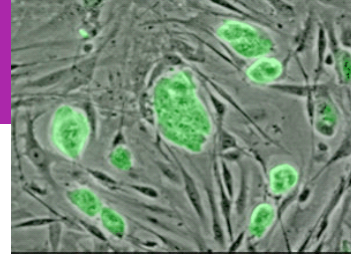


COLUMBIA UNIVERSITY

Stem Cell Research Update

Dr Hynek Wichterle



Stem Cells

COLUMBIA
UNIVERSITY



180 Fort Washington
Harkness Pavilion Floor 5
New York, NY 10032

Dr Wichterle is an assistant professor holding a joint appointment in the Departments of Pathology, Neurology and Neurobiology and Behavior at Columbia University Medical center.

He is currently focusing on the use of embryonic stem cells to study motor neuron development and function.

His work will help us understand why some nerve cells are susceptible to degeneration in neurodegenerative diseases. These methods may also provide a source of cells for both cell replacement therapies and identification of new neuroprotective drugs.

For more information on Dr Wichterle and his work, please visit:
http://www.columbiamnc.org/bio_wichterle.html

Where:

Harkness Pavilion 5. SMA Clinical Research Center

When:

Thursday, September 20, 2007

Time:

6:00-7:30

**Please RSVP to: Jessica O'Hagen
(212) 342 -5767
johagen@columbia.edu